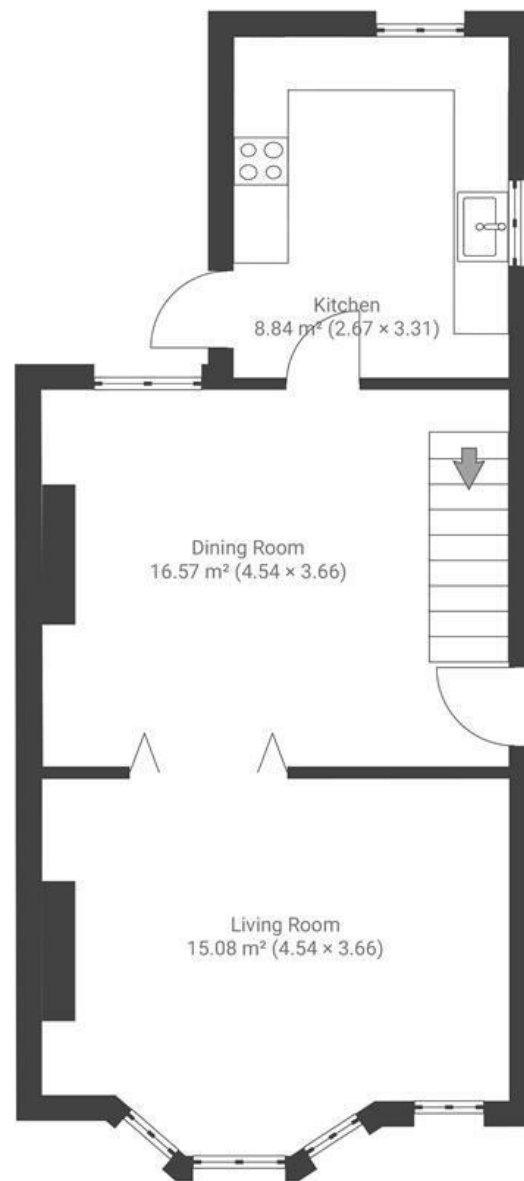


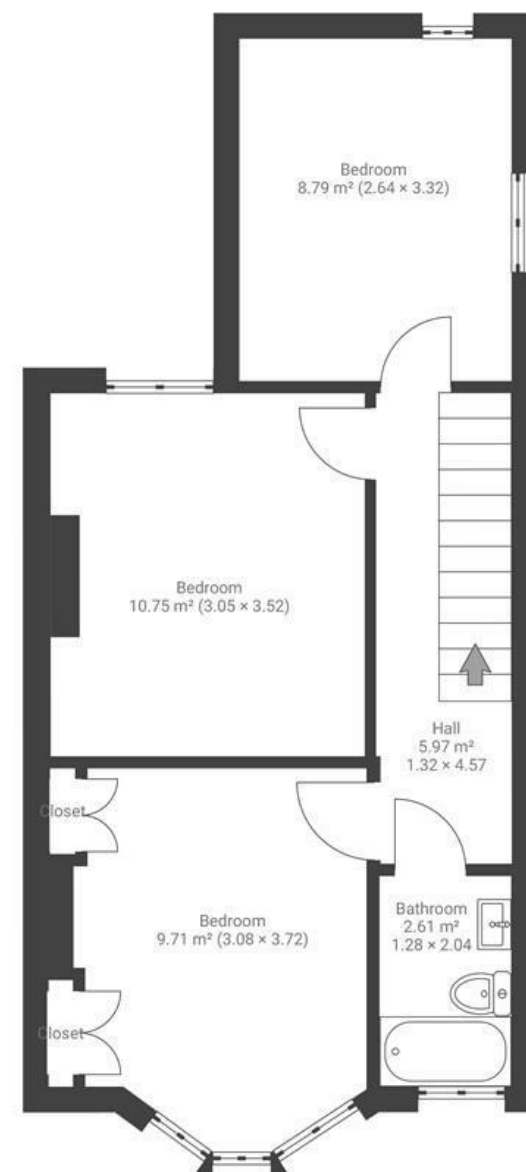
# Gerrish Avenue

## WHITEHALL

APPROXIMATE FLOOR AREA  
78.7 SQM / 847 SQFT



GROUND FLOOR



FIRST FLOOR

Boardwalk

# Gerrish Avenue

WHITEHALL, BRISTOL



£380,000



3 Bedrooms



BS5 9DG



1 Bathrooms

*"I love the light that streams in to the front of the house in the evenings, it's what sold me on it when we first viewed it 7 years ago. Since then we've made lots of improvements to the space and it really has been a haven for us - harbouring us through Covid and it's where my second daughter was born! Being close to great parks, schools, nurseries, pubs and places to eat have all made this a great place to live and is why we'll be staying in the area."*

